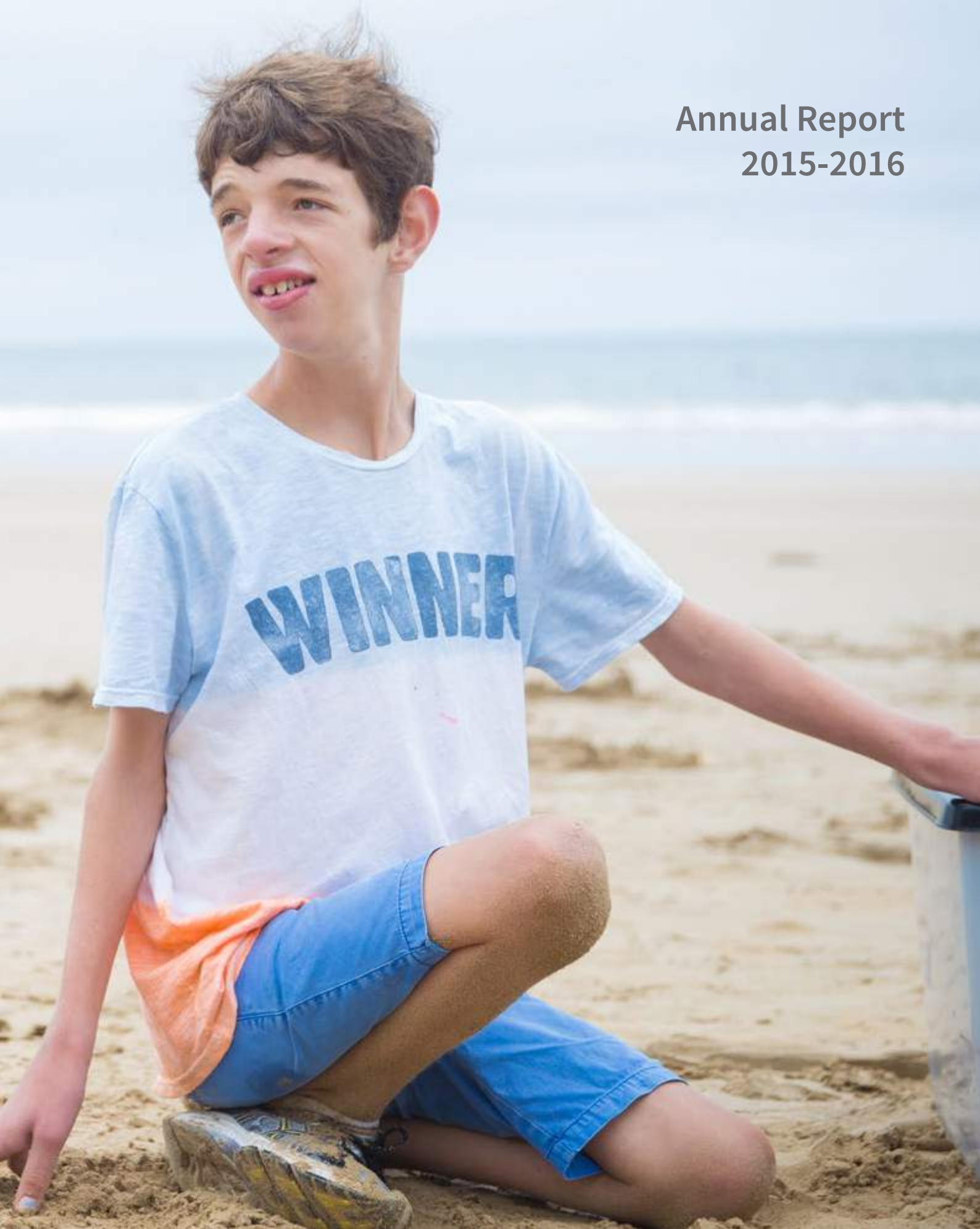




Annual Report 2015-2016



Gateways mission is to empower and support children and adults who have a disability/additional need and their families to maximise their:



Quality and enjoyment of life



Potential



Positive relationships within the community

A large, light blue, stylized quote mark icon inside a circular frame.

"You truly go above and beyond what is expected. Thanks for making us as happy and confident as we are today."

Contents

President's Report	2
Key Achievements	3
CEO's Report	4
Organisational Structure	5
Therapy & Inclusion Support	6-7
Respite & Recreation	8-9
Support Coordination	10-11
Accommodation Support & Specialist Services	12-13
A home away from home at Getaway House	14
Risk Management, Quality & ICT	15
Corporate Services	16
Marketing & Communications	17
Board of Management	18
Finance Report	19
Financial Statements	20-23
Thank You	24

About Gateways

Gateways Support Services is a community organisation that has been making a positive difference in the lives of children and adults with a disability or additional need and their families for more than 20 years. We see the potential and strengths of every person we support. Our team are here to help people with a disability to make choices and achieve their goals so they can live enjoyable, meaningful lives in their community. Each year more than 1,920 children, adults and their families are assisted throughout the Barwon area, South West Victoria and Western Metropolitan Melbourne.

Vision Statement

Together we can create a community where:

- Children and adults with a disability/additional need and their families are included, valued and well supported.
- We are all enriched through an understanding of, and increased participation in, the lives of the children and adults who have a disability/additional need.
- Gateways is a great organisation to be part of, and our staff and volunteers are known for their commitment to the organisation and our Mission.

President's Report

"We are what we repeatedly do. Excellence, then, is not an act, but a habit." Aristotle

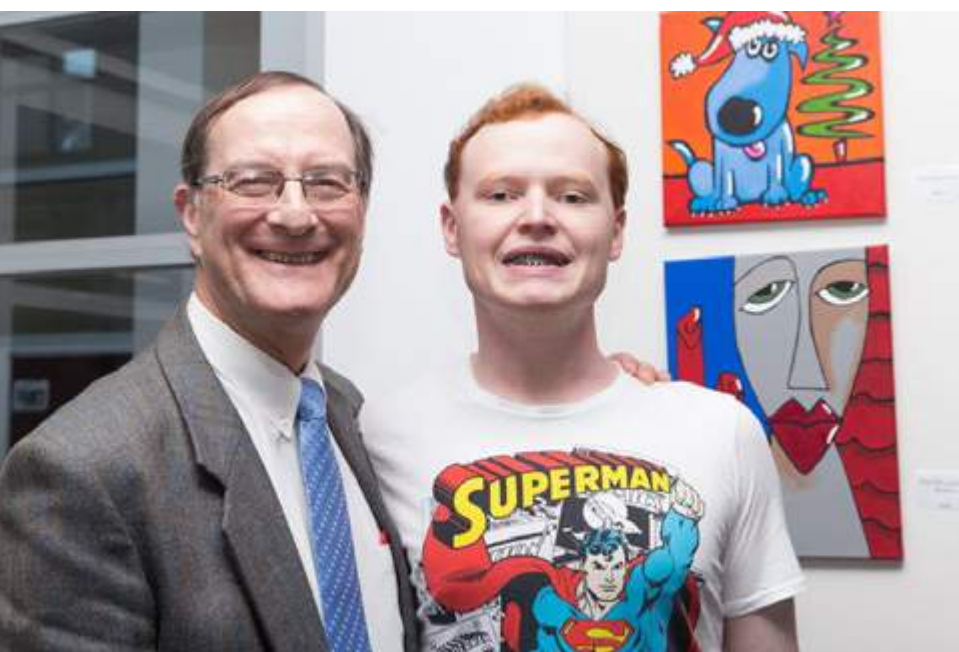
Warm greetings to you all. 2016 has been another huge Gateways period of consolidation to make sure our programmes, support, services, evidence based therapies, structures and procedures are best practice, safe and high quality.

A changing environment

We have continued to see the benefits, challenges and changes created by the introduction of the National Disability Insurance Scheme (NDIS). This new era

Expanding our services

We continue to search for better options, ways of going about things, efficiencies, innovations and sustainability within now a competitive and ever changing environment. Our caring culture remains paramount in our vision and future direction. We have strategic plans for these reasons to expand beyond the present geographic boundaries, so additional needs communities in both geographic directions, Western Melbourne and the Western District, can have the opportunity of the Gateways Support experience.



and changed culture of the funding and business model, has lead to broader and different opportunities, yet risk for our Gateways families and staff. We have worked extremely hard to establish the best systems possible to embrace these changes, within our lovely Albert Street office base and now establishing a 'state of the art' IT system so we can provide more.

A culture of respect

We have contributed to and applaud the Parliament of Victoria Inquiry into Abuse in Disability Services. The Final Report in May 2016 confirmed our own implemented approach and culture of respect and empowerment. We enforce an expectation of zero tolerance of derogatory attitudes towards both women and people with disabilities and inequalities in power and have systems in place

"Our caring culture remains paramount in our vision and future direction."

to underpin reporting practices. Abuse takes many forms: criminal, physical and sexual assault, verbal and emotional abuse, financial abuse, and neglect endangering life. Abuse occurs in a range of different settings. We all at Gateways must be vigilant, take responsibility and be accountable. The Victorian Government will amend the Disability Act 2006 (Vic) to make the Disability Commissioner the key oversight body for the disability sector in Victoria and an independent statutory body, which is a good thing.

Leadership, commitment and mission under the energy and loving guidance of the Gateways community and their families, the extraordinary staff at every level, our exceptional CEO Rosemary Malone, Senior Managers and the Board Members, has created a welcoming, supportive, responsive, caring environment. I hope you all concur the privilege that it is to be associated with Gateways. Join us online at www.gateways.com.au, or autismhelp.info or Facebook, or maybe fundraise or volunteer?

A warm welcome to all newcomers and au revoir and sincere thank you to those who are leaving us. You make and have made a difference.

All the best for the year ahead to you all.

Dr Bernie Jenner
President



Highlights 2015/2016



Provided services to **1,920** children, adults & their families



Income growth of **13%**



Achieved a customer satisfaction rating of **97%**



148% increase in support coordination services



Raised over **\$185,400** through fundraising and grants



New website launched **gateways.com.au**



New property purchased to support additional programs



Launched **Self Advocacy** program

CEO's Year in Review



Another great year for Gateways

A quick visit to Gateways Facebook page showcases a year of fun and great experiences for children and young people, new programs and great staff, valuable resources and information sessions, expanded job opportunities, words of encouragement for parents on their journey of care, and opportunities to participate in research to shape the future of service delivery.

People who choose our services provide great feedback to Gateways highlighting that we listen carefully and then provide skilled and caring staff. As one parent said "Excellent administration. Commitment to people - all people; staff, parents, clients etc. but with clients absolutely at the centre of the organization's purpose. Gateways staff are equally positive about the important difference that they make, and their willingness to "go the extra mile". In a recent survey 98% of Gateways staff said they believe that Gateways plays a positive role in the communities we serve.

Continued growth

Demand for our services continues to grow and we have now created a separate support coordination team, in addition to the growth in our therapy, respite and recreation and accommodation services.

Gateways also continues to focus on long term sustainability with 13% growth over the year and a healthy surplus to enable additional service development. Gateways' decision to purchase a property in Moolap has created a great base for the Social Connect program, and we have now purchased a second property in Northern Geelong.

Our achievements

Gateways has upgraded both our Gateways and autismhelp websites during the year and we are now in the process of further investment in our ICT systems to drive efficiency gains. Gateways has also had several quality audits over the last year with consistent positive feedback and full reaccreditation.

Community connections

Community is always vital to Gateways including our partnership with Autism Walk Geelong, and our participation and fundraising brilliantly supported by Gateways Auxiliary, Westfield Geelong, Geelong Cats and Eastbrooke Family Medical Centre.

We continue our positive partnerships with a range of organisations including Housing Choices Australia, Pinarc, Geelong West Neighbourhood House, Barwon CASA and Women with a Disability Victoria - working together to create greater value.

Preparing for the NDIS roll out

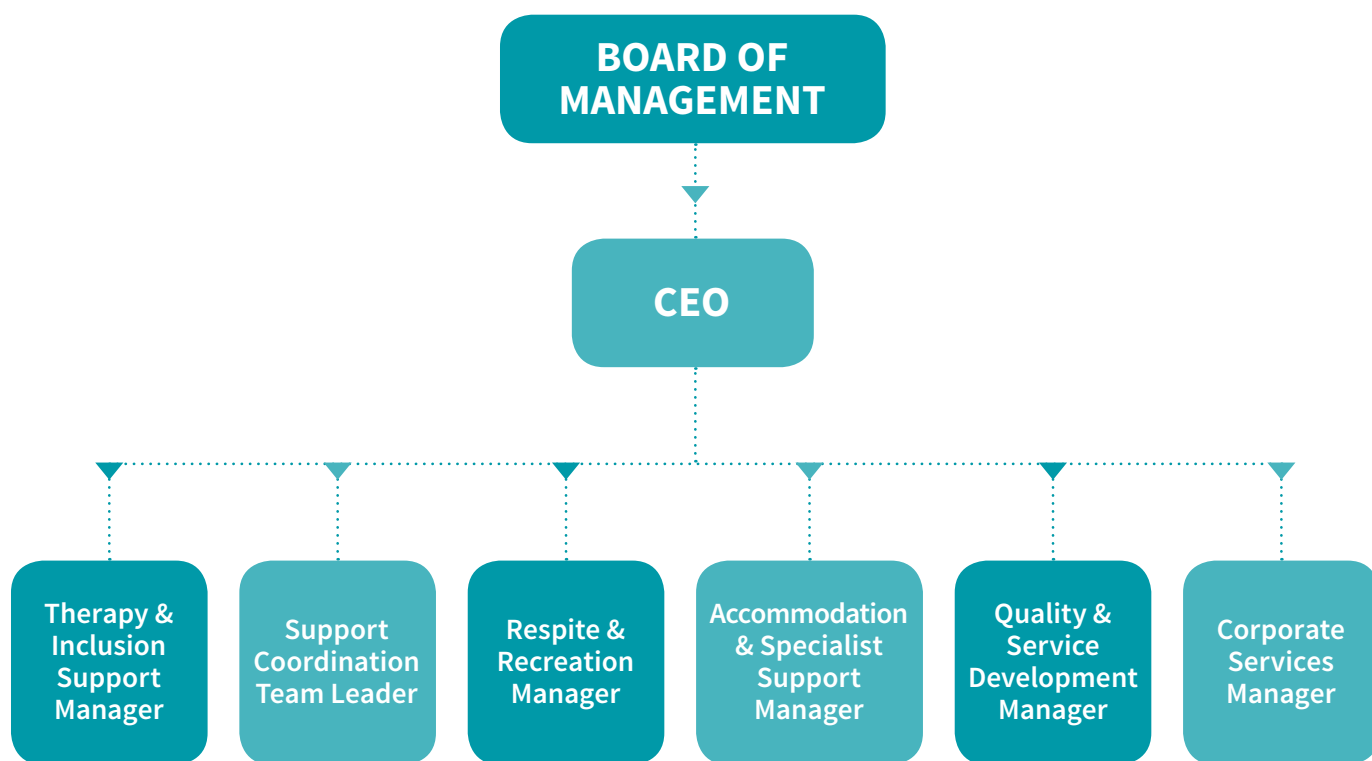
Every area of our work is undergoing significant change, and we continue to adapt to ensure we are well positioned for a range of opportunities in the years to come. We are also preparing for the roll out of the NDIS in the Western District, Golden Plains close to Geelong in 2017 and Western Melbourne in 2018.

Gateways Board and managers are fully committed to the future of Gateways and will continue to work collaboratively to ensure that Gateways is a service provider of choice for the amazing communities we serve and support.

Rosemary Malone
Chief Executive Officer

"The best thing about Gateways is that it exists! Total support when most needed."

Organisational Structure



Therapy & Inclusion Support

How we've helped



90

Autism Assessments for children

361

children received early intervention therapy services

216

children supported with Kindergarten Inclusion Support (KIS)

554

children supported by Preschool Field Officers

59

adults received an Occupational Therapy life skills assessment

25

children attended our Early Learning Kindergarten Program



"A wonderful program that provides additional support to assist in making the kindergarten year a positive one for all children."



Giving children the best possible start

Gateways continues to conduct Autism Assessments so that families of young children can access and plan appropriate early intervention therapies to help their children get the best possible start in life. Thanks to the support of many corporate and philanthropic trusts, we were able to complete additional assessments and help more families receive an accurate diagnosis for their child sooner.

Learning together

At the start of 2016 our Early Learning Kindergarten Program increased from 10 to 15 hours a week, in line with other State funded Kindergarten programs. This change has been well received by parents and is helping prepare the children for the transition to school. Gateways group programs including Stepping Stones, Kinder Playmates and Playmates have continued to provide a range of learning opportunities for children and opportunity for parents to share ideas and meet other families.

Promoting independent living skills for adults

Over the last year our Occupational Therapist who specialises in assessments for adolescents and young adults, has supported an increasing number of people with life skills assessments. This is helping them to increase their skills so they can live the life they choose more independently, a key goal of the NDIS.

Innovative new Lego therapy program

In term 2, 2016, Gateways launched the innovative 'Lego Mates' group therapy program to meet the needs of older primary school children. Facilitated by Gateways Speech Pathologists and Occupational Therapists, the program gives children a fun new way to access therapy, supporting their social interaction and learning by encouraging turn taking, sharing, problem solving and general social communication skills. Our inaugural group had a great term with 100% satisfaction rating and they also provided some great feedback on how we could improve the group for next term.

Community partnerships

Gateways have continued to support a number of students including Deakin Medical Students, RMIT & LaTrobe Maternal & Child Health Nurse Students and Deakin Bachelor of Early Childhood & Development Students to complete placements. Thank you to Belmont Community Kindergarten for their ongoing support in allowing us to use their education space for a number of our group programs so we can provide these services to children and their families.

"Giving parents the tools & knowledge on how we can improve the quality of our children's lives."

Respite & Recreation

How we've helped



238

participants in recreation programs

343

different recreation activities

15,675

hours of recreation

173

respite/community participation options

33,680

hours of respite/community participation

2,476

hours of volunteer recreation support

79

aged care activities



Creating more opportunities to get out and about in the community

It has been an exciting year as we have continued to grow our recreation programs to provide a range of experiences that offer social opportunities and learning for children and adults with disabilities, and support people with dementia to remain connected to their communities.

Building on the strong friendships the children make at our school holiday program, we launched a new group Awesome Outings for Kids (A-OK) to give the children a chance to meet during the school term. This new group is proving a great success with the children forming strong friendships and having lots of fun together out and about on weekends.

Our recreation groups have experienced a number of new adventures including trips to Melbourne, Ballarat and Warrnambool, where they have enjoyed sightseeing, visiting various exhibitions as well as seeing some great shows. A highlight for our Colac Awesome Choices group was an adventurous day out with the Ballarat 4WD Club. We are helping more young adults to get out and about in the local community with our Get Up and Go Club now offering more activities throughout the year. These activities are building confidence, improving social skills and providing opportunities to make new friends.

School holiday fun

The school holidays have been action packed full of fun with our programs in both Geelong and Colac giving children the chance to experience a variety of new activities including trips to Melbourne, Lorne and the Otways, different themed days and in a first our own big wave waterslide. Thanks to our partnership with Westfield Geelong many of the activities were free for families.

Supporting ordinary lives

We have again supported young people to enjoy mainstream activities just like other young people in the community, like weekends away with their friends. For the two teenage girls who went to Ballarat for the weekend, this was an opportunity to have fun together independent of their families and learn new skills including shopping and cooking themselves dinner. Our team are always actively helping individuals to learn new skills, try new experiences and open new doors for children and adults with disabilities.

Community participation for over 65's

Last year together with Geelong West Neighbourhood House we launched the new 'Geelong West Cafe Care Connect' program. This is providing opportunities for people with dementia or the frail aged to get out into the community and participate in a supportive social group along with their carers. We look forward to seeing this program continue to develop over the coming year.

Boost 4 Kids

The strong partnership between Barwon Health, St Laurence & Gateways has ensured that the Boost 4 Kids program continues to provide much needed respite

to families caring for children and young people with complex medical support needs. This amazing program gives children and young people opportunities to be away from home in a very safe, homely environment. With support from Westfield Geelong, we have been able to provide some great entertainment for everyone to enjoy during their weekends away including singing and dancing from Willowstar and Ben Constanzo. Generous support from the Mazda Foundation also enabled us to support more families.

Volunteers brighten lives

Our volunteers provide such strong support to our recreation programs and to individuals through our Interchange program. Their commitment to be involved and to make a difference in the lives of children and adults with a disability is outstanding. One volunteer commented that volunteering 'makes my heart sing'. Volunteering enriches so many lives and Gateways wishes to thank all our volunteers for their wonderful support offered to individuals, families and Gateways staff. We were pleased to nominate Jan Wansbrough and Sharon Nolen for volunteer awards, for the contribution they have made to our recreation programs and to the Interchange program respectively. We are very proud to have them as part of Gateways community.



Support Coordination

How we've helped



169

NDIS participants assisted with Support Coordination

188

Families & professionals received information and support

224

people participated in group support and information sessions

89

children and families in the Western District supported with Flexible Packages



A new Support Coordination team

Support Coordination has been an exciting area of growth and development over the past year with the creation of a new Support Coordination team. Jenny Empson was appointed Support Coordination Team Leader and four new full time Complex Support Coordinators also joined the team.

Helping people make the most of their NDIS plan

The team have supported 169 NDIS participants in the Barwon area with Support Coordination, Support Connection and Life Transition Planning. They have worked with these clients and their families to assist them to engage their NDIS plan and manage elements of their care

across multiple providers to achieve their NDIS goals. This has included facilitating connections with therapists, service providers, providing crisis management support, helping young people to transition from school to the world of work or study and also supporting people to move into independent living.

Supporting families in the South West

Our Warrnambool team have provided incredible support to families in the South West with Case Management, Flexible Packages and Contenance Packages. They have also been preparing for NDIS rollout in 2017, which will bring an exciting range of new service options to families in the South West area.

Educating & supporting parents

Gateways Parent Support Coordinator has continued to provide valuable education and support for families about the NDIS, as well as facilitating a number of support groups and information sessions for parents and carers. A partnership with Family Relationship Support For Carers enabled us to provide a free information seminar about

sexuality and disability and also our first 'Understanding Autism for Grandparents' workshop. Both events were well attended and we received wonderful feedback. One grandmother who attended the autism information evening said "it is wonderful to get some more insight into our grandchild so that we can better support our family." To further help increase awareness of autism and promote a more inclusive society we held a free Autism Information session for parents, carers and family members. In another first for Gateways, we filmed the session thanks to support from our Community Partner Westfield Geelong, to allow families to later access the information online.

Client achievement

After finishing school at Barwon Valley last year, we've supported Matthew through Life Transition Planning to find meaningful work at a local café. Here he is learning hospitality skills and what it's like to be in the workforce. Matthew's new job has been a great success as he is a valued member of the team and is enjoying making new community connections.



"Support Coordination is so important for us. As a single mum and sole carer of my son, I have my hands full with day to day care 24/7. I would not be able to manage without the wonderful help I receive from my Support Coordinator."

Support Coordination: Supporting people to achieve their goals

We're supporting sisters Sandy and Nicole to make the most of their NDIS plan, so they can live the life they choose.

Gateways have provided support to Sandy, who has an intellectual disability, and her sister Nicole, who has Down syndrome, for several years. The introduction of the NDIS has opened a lot of new doors for the girls, to get out into the community and participate in a range of different activities.

This has been made possible with the help of Bronwen, their Support Coordinator at Gateways. Over the past year, Bronwen has worked closely with the sisters supporting them to access new opportunities and experiences that interest them.

Sandy and Nicole's lives are now full with a variety of activities that they've chosen and that suit their individual needs. This includes one of their new favourite places, the Cloverdale Community Centre, where the girls go along weekly to enjoy art and scrapbooking classes, as well as dance and ukulele lessons. Bronwen helped find and link Sandy and Nicole with Cloverdale, who have welcomed the sisters and accommodated for their additional needs so they can participate in these community classes.

As well as Cloverdale, the girls also enjoy getting out and about building their confidence and



independence in the community, keeping fit at regular gym classes and working at a local Op shop. Bronwen continues to support the girls to broaden their experiences and live a rich and fulfilling life.

"You've been there when I've needed help." – Sandy

Accommodation Support & Specialist Services

How we've helped



50

adults living in shared
accommodation

10

children cared for in Out Of
Home Care

15

adults and 1 child in Social
Connect

2

adults living independently

62

children accessing overnight
respite through Getaway House



Accommodation Support & Specialist Services continues to grow, now employing around 200 staff.

Accommodation

We continue to assist 50 people to enjoy a full life in their local community with high quality support. They have set and achieved many goals including holidays to Queensland, weekends away, nights out, attending concerts, attending sporting events, volunteering at community events, getting their learners permit and participating in family celebrations.

Our Accommodation Support staff continue to do a great job upskilling people with complex disabilities, which was reflected in positive feedback in our recent accreditation quality audit with all standards met.

My Life My Choice

Gateways Team Leaders Sally Tozer-Jones and Rod Day have led a 'My life My choice' human rights self-advocacy project with everyone in the accommodation team seeing the importance of empowering our residents, particularly those with limited communication skills.

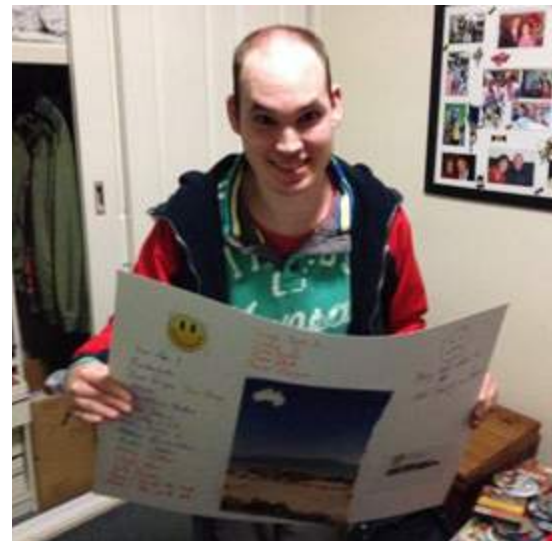
A new home for Social Connect

Social Connect moved to its spacious new home on a one acre

property in September 2015. The new location features a range of outdoor and indoor options including an arts workshop and sensory room. It has been designed and set up specifically to help the 15 young adults we support, including many with complex needs, to achieve their goals. A new overnight program, is giving the young adults new opportunities to develop independent living skills, such as cooking, shopping and general household tasks. They have also continued to be actively involved in the community with a number volunteering at a range of community events and businesses around Geelong.

Children & Youth Services

Gateways supported 10 children living in three homes in the community. The children receive nurturing care from staff, who help them to learn the skills to achieve their goals and dreams in adulthood. They have enjoyed great opportunities to be part of their community by attending school, playing sports, going to AFL games, being in scouts and performing in dance concerts.



"My daughter has the environment and support that is her family."

A home away from home at Getaway House



Getaway House in Warrnambool is an overnight respite house, where children with a disability in the South West of Victoria can come to have fun with their friends in a caring, homely environment while their families take a break from their normal caring role.

The children who regularly visit, look forward to their holidays at Getaway house and all of the fun activities they enjoy on their stay. Each child can stay for up to three nights at a time so they can spend time with friends, develop independence skills and continue to work on their goals. There are always lots of exciting things to do like arts, crafts, cooking, games, movies, jumping on the trampoline, playing in the cubby

house and sand pit as well as heading out to play at the park.

For the families, Getaway House provides them with some 'time out' while they know their child is being cared for in a safe environment. As one parent said, *"having Getaway House has been a godsend for us. It is the only place we have that we feel our child is safe and well cared for when he is away from us."*

The house has also provided opportunities for children to have extended stays to help support families in a time of crisis.



Risk Management, Quality & ICT

Highlights



Achieved a service user satisfaction rating of 97%



Met all requirements for quality accreditation



Our commitment to quality

Gateways strives to meet the highest quality standards for all of the services we provide.

In June 2016 we met all requirements for DHHS & NDIS full accreditation and received very positive feedback with the independent auditor stating that:

"Gateways Support Services is an organisation that puts its vision and mission into practice - in all aspects of its service delivery pathway."

Gateways also fully complies with our obligations under section 11 of the Carers Recognition Act 2012 as a care support organisation and with annual reporting of complaints and compliments to the Disability Services Commissioner.

Risk Management

Gateways' comprehensive risk management plan is continuously reviewed to ensure risks including those to service users, staff and community safety, financial risk, leadership and HR are identified, managed and minimised.

Happy families

Gateways seeks feedback from our service users with a 97% consumer satisfaction rating this year. We value the feedback we receive to continually improve and adapt how we best support children, adults and their families to achieve their goals.

Planning for the future

At the start of 2016 we commenced a major ICT project to ensure Gateways can continue to improve the quality and efficiency of our services.



Corporate Services

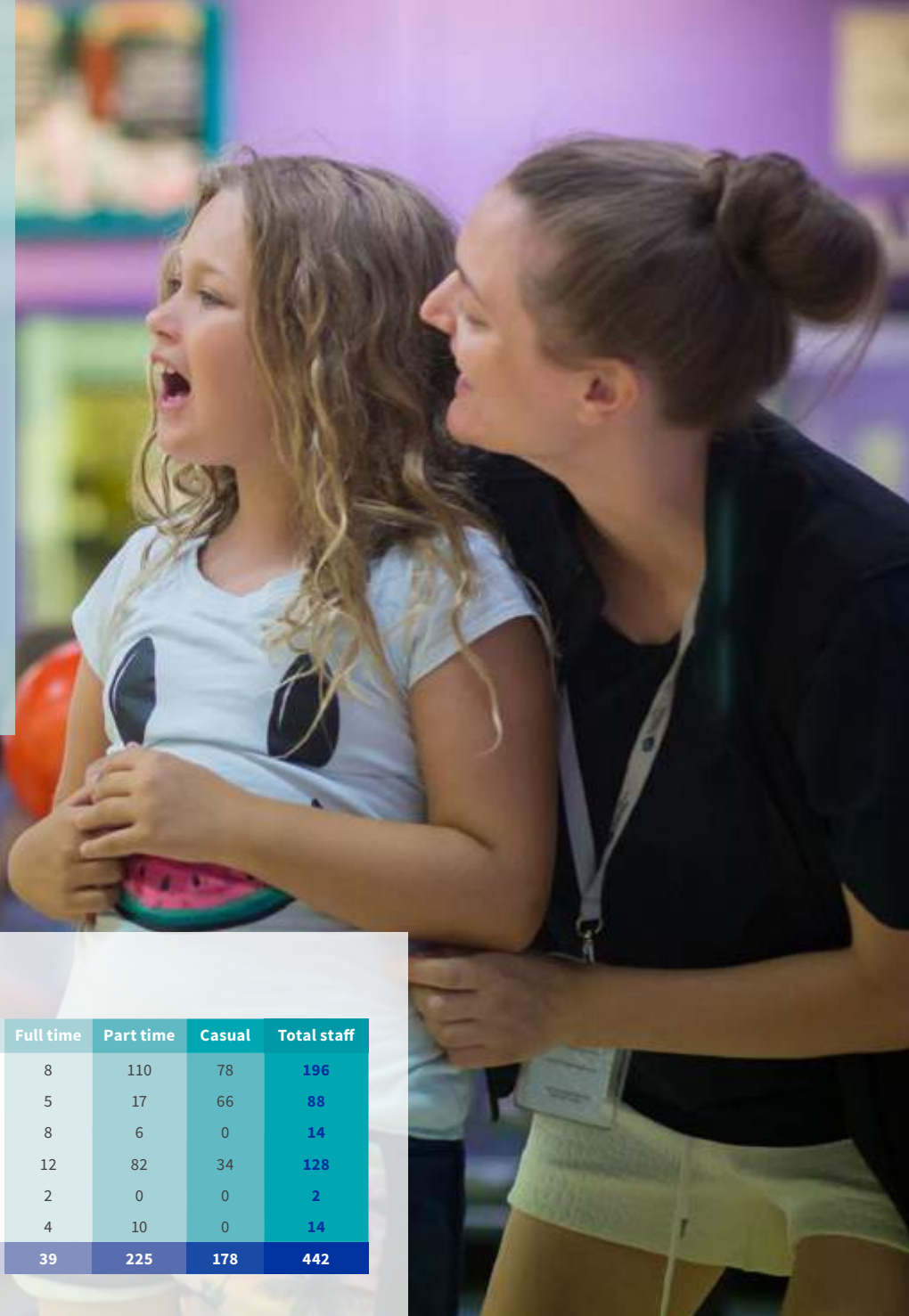
Highlights



Diverse workforce of 442 people



96% of staff would recommend working with us



Staffing Profile

Division	Full time	Part time	Casual	Total staff
Accommodation & Specialist Support Services	8	110	78	196
Respite & Recreation	5	17	66	88
Support Coordination	8	6	0	14
Therapy & Inclusion Support	12	82	34	128
Quality, Innovation & Service Development	2	0	0	2
Corporate Services	4	10	0	14
Grand Total	39	225	178	442

Our people are our strength

Gateways has a diverse workforce of client support and professional staff with 442 people employed. 82% of the staffing group are female and the majority of staff are employed in a part time or casual capacity.

This year seven staff are reaching 10 years of service, five staff 15 years and three staff reaching 20 years, which shows outstanding dedication and commitment.

Our staff continue to enjoy working at Gateways, with 96% of staff saying they would recommend working for Gateways to a friend and 87% feeling satisfied with their position.

We would like to thank all of our staff for their dedication in making a positive difference in the lives of people with disabilities and their families.

Safety first

Our emphasis on the promotion of safe systems of work continues to provide positive results with our WorkCover premium being 41% below the sector average. We acknowledge the important role that all staff play in preventing and minimising work related accidents, incidents, injuries and illnesses.

"The people at Gateways are their greatest asset. They are so dedicated to their jobs and providing excellent service to their clients."



Marketing & Communications



Short films celebrate disability on the big screen

Filmmakers from across Geelong and South Western Victoria of all ages and levels of film making experience, shared their untold stories celebrating disability in our inaugural Gateways Film Festival of Amazing Shorts 'GAFFAS.' This new initiative, supported by Geelong's most famous film star Guy Pearce, was very successful in raising awareness and highlighting the positive contributions that people with disabilities make to their families and the community.



Community support

The money we receive through fundraising and grants enables us to continue providing children and adults with a disability and their families the extra support

they need. Thank you to everyone who helped us raise over \$185,000 this year. The Gateways Auxiliary Committee were again an essential fundraising force, with a number of successful events including the annual Golf Day, bus trip and film nights raising an incredible \$33,000.

Having a ball with the Geelong Cats

Our partnership with the Geelong Cats and player ambassador Harry Taylor continued to help raise awareness and bring opportunities to people with a disability and their families throughout the year. More than 60 children and adults enjoyed a unique experience of meeting their Cats heroes and kicking the footy with them on the Simonds Stadium ground during a private footy clinic as part of our Autism Awareness month celebrations. Community tickets from the Club also gave many of our supported accommodation residents, families and volunteers the opportunity to enjoy a great day out at the footy.

Westfield spread the joy of Christmas

Christmas was extra special for many Gateways families last year thanks to our community partner Westfield, who bought the first Sensitive Santa to Geelong. The special sensory friendly sessions were very popular and for many of the children with additional needs it was the first time they had been able to experience the enjoyment of meeting Santa. The Christmas joy didn't stop there with our gift wrapping at Westfield being our most successful year to date, raising more than \$13,000 thanks to our team of more than 70 dedicated volunteers who helped wrap presents during December.

Fresh new websites

This year we launched fresh new websites for gateways.com.au and our community resource autismhelp.info. Both of these sites have many added functions to make it easier for families to access the information they need and in multiple languages.

Board of Management

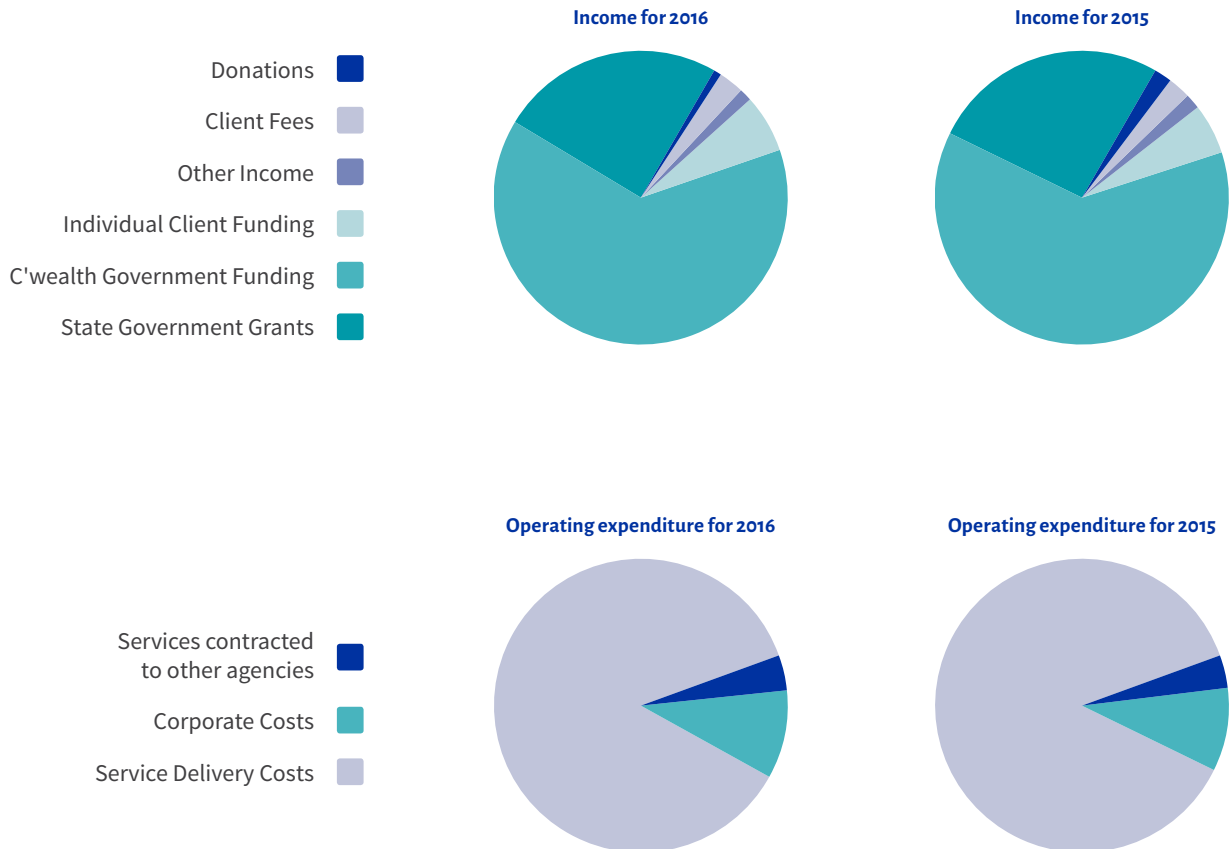
Gateways Support Services is governed by a skilled and experienced voluntary Board of Management. The Board comprises:



Finance Report

Gateways has experienced a successful year, reporting a sound operating surplus, highlighting the thorough and rigorous financial management required to function well in a fluid environment.

Gateways has experienced steady growth over the year with increased operating revenue and expenses of 13% and 9% respectively from the previous year. This is mainly due to growth in Recreation Services.



The graphs above show broad groupings of operating revenue and expenses for 2016 and 2015.

As in previous years, the audited financial report is a summarised version of the audited financial reports with accompanying notes. A full set of reports is available on application to the Gateways Albert Street office, Geelong West.

Financial Statements

STATEMENT OF COMPREHENSIVE INCOME FOR THE YEAR ENDED 30 JUNE 2016

	2016 \$	2015 \$
		Restated
Revenues from ordinary activities	21,504,223	19,031,840
Employee expenses	(16,887,295)	(15,181,412)
Depreciation expenses	(430,885)	(409,168)
Other expenses from ordinary activities	(2,610,585)	(2,432,787)
Net profit from ordinary activities attributable to the association	1,575,458	1,008,473
Other comprehensive income	-	-
Total comprehensive income of the association	1,575,458	1,008,473

STATEMENT OF FINANCIAL POSITION AS AT 30 JUNE 2015

	2016 \$	2015 \$	2014 \$
		Restated	Restated
Current Assets			
Cash Assets	6,952,001	6,473,546	5,669,819
Receivables	61,836	84,466	89,520
Other	966,840	375,447	93,277
Total Current Assets	7,980,676	6,933,458	5,852,617
Non-Current Assets			
Property, plant and equipment	4,461,371	4,197,309	3,850,455
Total Non-Current Assets	4,461,371	4,197,309	3,850,455
Total Assets	12,442,047	11,130,767	9,703,072

Financial Statements

	2016 \$	2015 \$	2014 \$
Current Liabilities			
Payables	2,878,117	3,283,179	2,889,868
Provisions	1,244,412	1,201,866	1,021,304
Total Current Liabilities	4,122,529	4,485,045	3,911,172
Non-Current Liabilities			
Provisions	399,121	300,784	455,434
Total Non-Current Liabilities	399,121	300,784	455,434
Total Liabilities	4,521,650	4,785,829	4,366,606
Net Assets	7,920,397	6,344,940	5,336,466
Equity			
Reserves	1,012,000	1,012,000	1,012,000
Retained earnings	6,908,397	5,332,939	4,324,466
Total Equity	7,920,397	6,344,940	5,336,466

STATEMENT OF CHANGES IN EQUITY FOR THE YEAR ENDED 30 JUNE 2016

	Retained Earnings \$	General Reserves \$	Asset Revaluation Reserve \$	Total \$
Balance at 1 July 2014	4,324,466	682,000	330,000	5,336,466
Profit for the year ended 30 June 2015	1,008,473	-	-	1,008,473
Balance at 30 June 2015	5,332,939	682,000	330,000	6,344,940
Profit for the year ended 30 June 2016	1,575,458	-	-	1,575,458
Balance at 30 June 2015	6,908,397	682,000	330,000	7,920,397

Financial Statements

STATEMENT OF CASH FLOWS FOR THE YEAR ENDED 30 JUNE 2016

	2016 \$	2015 \$
Cash Flows From Operating Activities		
Client fees	517,412	501,485
Donations received	134,978	372,289
Operating grant receipts	19,964,332	18,046,627
Sundry income	164,102	201,436
Payments to suppliers and employees	(19,797,815)	(17,683,465)
Interest received	120,810	117,845
Net cash provided by operating activities 16(b)	1,103,819	1,556,217
Cash Flows From Investing Activities		
Fixed asset purchases	(724,877)	(767,644)
Proceeds on sale of fixed assets	99,509	15,150
Net cash used in investing activities	(625,368)	(752,494)
Net increase in cash held	478,450	803,723
Cash at the beginning of the financial year	6,473,546	5,669,819
Cash at the end of the financial year 16(a)	6,952,001	6,473,546

Statement by Members of Board of Management

The Board of Management declare that in their opinion, the concise financial report of Gateways Support Services Inc for the year ended 30 June 2016 complies with Accounting Standards AASB 1039: Concise Financial Reports.

The financial statements and specific disclosures included in this concise financial report have been derived from the full financial report for the year ended 30 June 2016.

The concise financial report cannot be expected to provide as full an understanding of the statement of income, balance sheet, statement of changes in equity and financing and investing activities of the Association as the full financial report, which is available on request.

This declaration is made in accordance with a resolution of the Board of Management.



B. Jenner
President



J. Gavens
Treasurer

Dated this day of 21 September 2016

Financial Statements

Independent Audit Report

REPORT ON THE CONCISE FINANCIAL REPORT

We have audited the accompanying concise financial report of Gateways Support Services Inc which comprises the statement of financial position as at 30 June 2016, the statement of comprehensive income, statement of changes in equity, statement of cash flows for the year then ended, and related notes, derived from the audited financial report of Gateways Support Services Inc for the year ended 30 June 2016. The concise financial report does not contain all the disclosures required by the Australian Accounting Standards and accordingly, reading the concise financial report is not a substitute for reading the audited financial report.

BOARD OF MANAGEMENT'S RESPONSIBILITY FOR THE CONCISE FINANCIAL REPORT

The Board of Management of the association is responsible for the preparation of the concise financial report in accordance with Accounting Standard AASB 1039 Concise Financial Reports, and for such internal control as the Board of Management determines is necessary to enable the preparation of the concise financial report.

AUDITOR'S RESPONSIBILITY

Our responsibility is to express an opinion on the concise financial report based on our procedures which were conducted in accordance with Auditing Standard ASA 810 *Engagements to Report on Summary Financial Statements*. We have conducted an independent audit, in accordance with Australian Auditing Standards, of the financial report of Gateways Support Services Inc for the year ended 30 June 2016. We expressed an unmodified audit opinion on that financial report in our report dated 27 September 2016. The Australian Auditing Standards require that we comply with relevant ethical requirements relating to audit engagements and plan and perform the audit to obtain reasonable assurance whether the financial report for the year is free from material misstatement.

An audit involves performing procedures to obtain audit evidence about the amounts and disclosures in the concise financial report. The procedures selected depend on the auditor's judgement, including the assessment of the risks of material misstatement of the concise financial report, whether due to fraud or error. In making those risk assessments, the auditor considers internal control relevant to the entity's preparation of the concise financial report in order to design audit procedures that are appropriate in the circumstances, but not for the purpose of expressing an opinion on the effectiveness of the entity's internal control. Our procedures included testing that the information in the concise financial report is derived from, and is consistent with, the financial report for the year, and examination on a test basis, of audit evidence supporting the amounts and other disclosures which were not directly derived from the financial report for the year. These procedures have been undertaken to form an opinion whether, in all material respects, the concise financial report complies with AASB 1039 Concise Financial Reports.

We believe that the audit evidence we have obtained is sufficient and appropriate to provide a basis for our audit opinion.

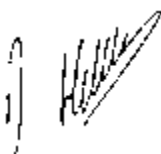
INDEPENDENCE

In conducting our audit, we have complied with the independence requirements of the *Corporations Act 2001*.

OPINION

In our opinion, the concise financial report of Gateways Support Services Inc for the year ended 30 June 2016 complies with Accounting Standard AASB 1039 *Concise Financial Reports*.

ANDREW FREWIN & STEWART
61 Bull Street, Bendigo Vic 3550



David Hutchings
Partner

27 September 2016

Thank You

We would like to thank the numerous corporations, trusts, foundations, individuals, fundraising groups, volunteers, Victorian and Commonwealth Governments especially the Department of Health & Human Services (DHHS), the Department of Education and Training, (DET), the Department of Social Services (DSS) and the National Disability Insurance Scheme (NDIS). Your support enables us to continue providing children and adults with a disability and their families with the extra support they need.



Portarlington Community Dance Group



Simon Cole





**Thank you for helping us
make a difference in the lives
of children and adults with a
disability and their families.**

Supporting and empowering people with a disability



(03) 5221 2984



info@gateways.com.au



Head Office
10-12 Albert Street
Geelong West Vic 3218



www.gateways.com.au
www.autismhelp.info



Find us on Facebook